



1.1 Setting up the battery/computer box for a remote RTI radar

Materials:

- Three 6 volt batteries connected in series
- Remote radar computer

Procedure

- 1) When ordering for equipment to track bird movement, researchers will purchase the following from RTI
 - a. An RTI remote radar with an XIR box (a computer to control the radar on site)
 - b. A pelican case (Fig 1., Fig. 2) with:
 - i. A custom made wooden grate that secures the equipment (computer, batteries, charger) inside the pelican case when moving
 - ii. Protected holes in the sides of the case to attach radar chords to the computer and batteries



Figure 1. Radar cables attached to protected sockets on outside of pelican case

- 2) The researcher will need to additionally purchase:
 - a. Two 6V batteries
 - b. A power bar
 - c. A 120 watt solar panel *or* an extension cord to give charge to the batteries
 - d. An inverter (if a solar panel is being used to run the computer)



RADAR PROTOCOLS

1.1 Setting up the battery/computer box for a remote RTI radar

Updated March 31, 2011

- 3) Place the two six volt batteries into the pelican case, ensuring they are snug inside their designated compartments in the wooden grate (on the left side of the pelican case)
- 4) Connect the batteries in parallel with jumper wires

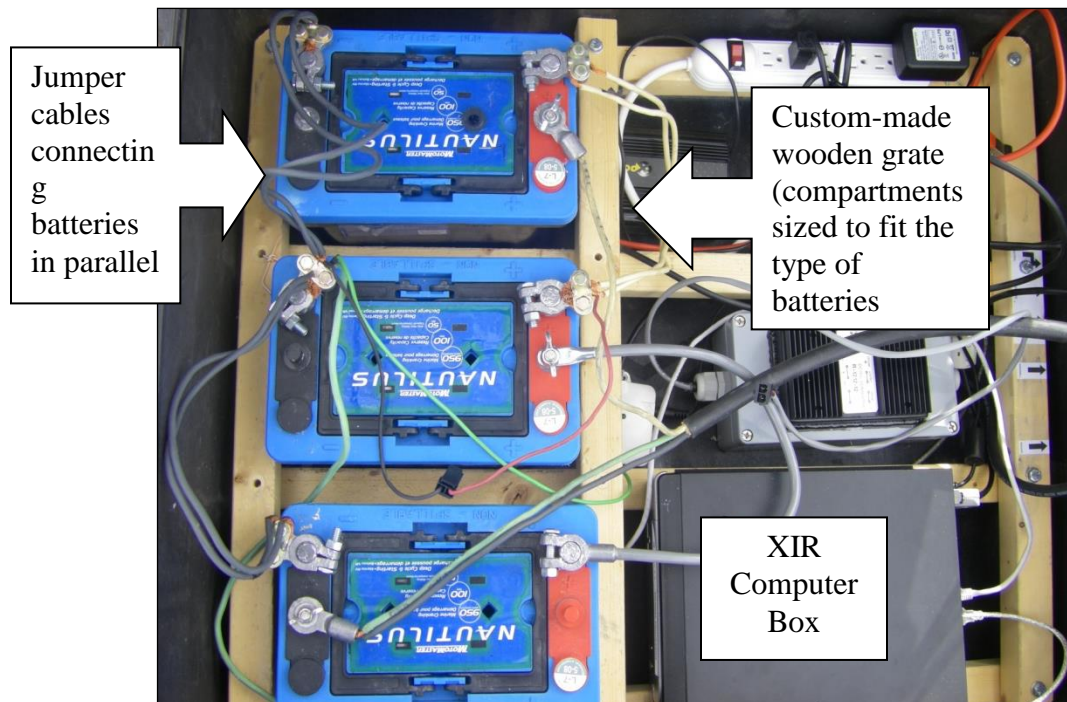


Figure 2. Inside of pelican case with XIR computer box, custom made wooden grate and three 12V batteries connected in parallel.