



Information and Technology Services: Client Services:

Wireless Setup for Windows 8

Procedure:

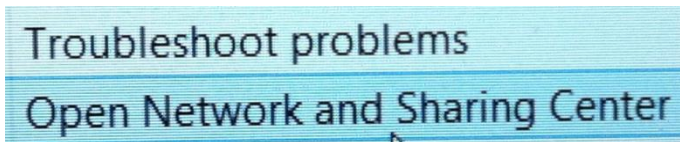
1. On the Start Screen select Desktop



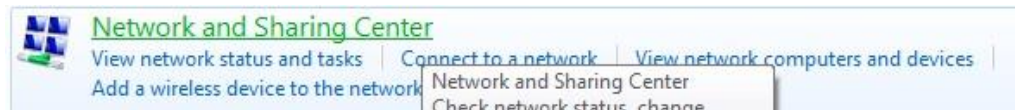
2. In the bottom right corner, right click on the Wireless indicator



3. Select Open Network and Sharing Center



- 4.



- a. Select Manage Wireless Networks



- b. Click Add



c. Select Manually Create a Network Profile

Manually create a network profile
This creates a new network profile or locates an existing network and saves a profile for the network on your computer. You need to know the network name (SSID) and security key (if applicable).

i. Use the following settings:

1. Network Name: UNBC
2. WPA2-Enterprise
3. AES
4. Check the box beside Start this connection automatically
5. Check the box beside Connect even if this network is not broadcasting
6. Click Next

Manually connect to a wireless network

Enter information for the wireless network you want to add

Network name: UNBC

Security type: WPA2-Enterprise

Encryption type: AES

Security Key: Hide characters

Start this connection automatically

Connect even if the network is not broadcasting

Warning: If you select this option, your computer's privacy might be at risk.

Next Cancel

2. Configuring your PC to use encrypted wireless

a. Select Change Connection settings

Manually connect to a wireless network

Successfully added UNBC_

→ Change connection settings
Open the connection properties so that I can change the settings.

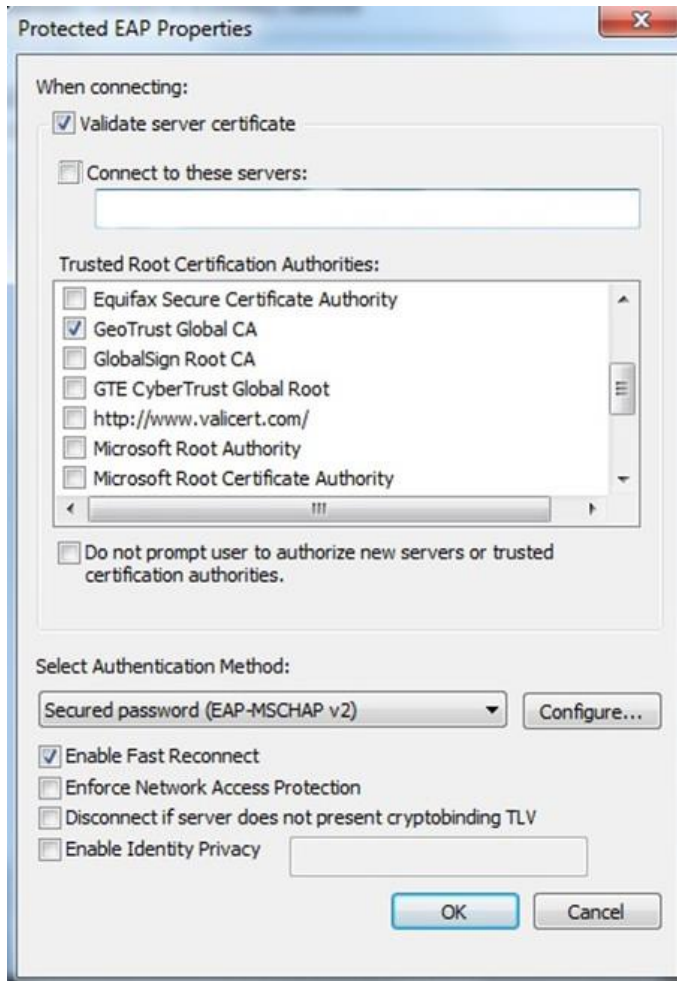
b. Select the security tab



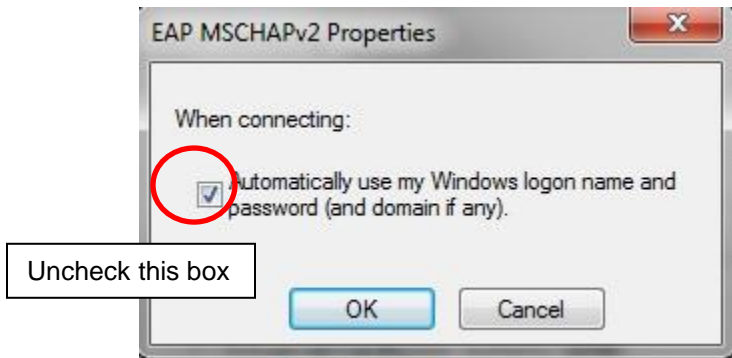
- c. Microsoft: Protected EAP (PEAP) should be automatically selected, if it is not, select it.
- d. Make sure the Remember my credentials for this connection every time I'm logged on is checked.

3. Configuring your PC continued

- a. Click Settings – this opens the PEAP properties window



- b. Use the following settings:
 - i. Validate Server Certificate
 - ii. Use the GeoTrust Global CA certificate
 - iii. Authentication Method: Secured Password (EAP-MSCHAP v2)
 - iv. Enable Fast Reconnect
 - v. Click on the Configure button and uncheck the checkbox



- vi. Click Ok

4. Connect to the network

- a. Click on your wireless network indicator
- b. Enter your username and password – make sure you have UNI\ ahead of your username