



*Information and Technology Services: Client Services:*

## Wireless Setup for Windows 7

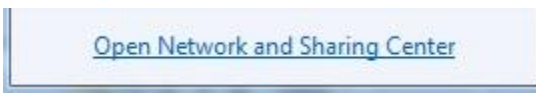
## Procedure:

### 1. Create a network profile for the encrypted wireless service

- a. Left click on the wireless icon in the bottom right of your screen



- b. Select Open Network and Sharing Centre



- c. Select Manage Wireless Networks



- d. Click Add



- e. Select Manually Create a Network Profile



### Manually create a network profile

This creates a new network profile or locates an existing network and saves a profile for the network on your computer. You need to know the network name (SSID) and security key (if applicable).

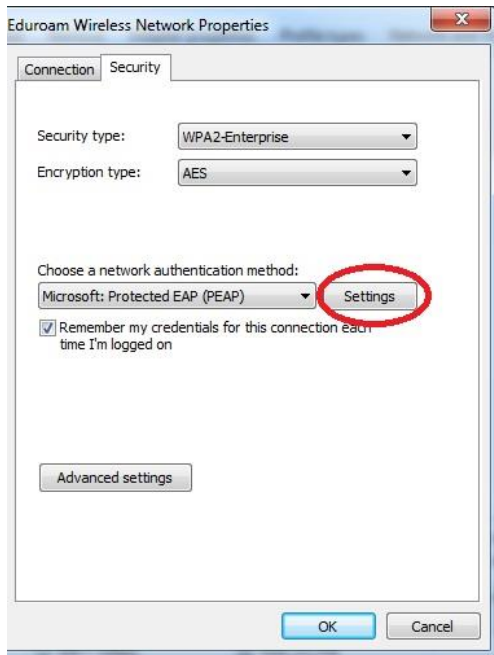
- i. Use the following settings:
  1. Network Name: UNBC
  2. WPA2-Enterprise
  3. AES
  4. Check the box beside Start this connection automatically
  5. Check the box beside Connect even if this network is not broadcasting
  6. Click Next

The screenshot shows the 'Manually connect to a wireless network' dialog box. The title bar reads 'Manually connect to a wireless network'. The main heading is 'Enter information for the wireless network you want to add'. The fields are: Network name: UNBC; Security type: WPA2-Enterprise; Encryption type: AES; Security Key: (empty) with a 'Hide characters' checkbox. There are two checkboxes: 'Start this connection automatically' (checked) and 'Connect even if the network is not broadcasting' (unchecked). A warning message states: 'Warning: If you select this option, your computer's privacy might be at risk.' At the bottom right are 'Next' and 'Cancel' buttons.

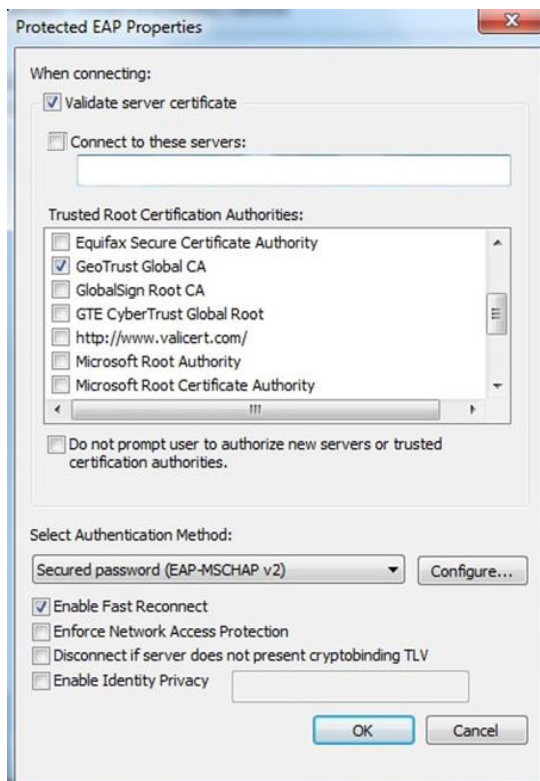
## 2. Configuring your PC to use encrypted wireless

The screenshot shows the 'Manually connect to a wireless network' dialog box after a successful connection. The title bar reads 'Manually connect to a wireless network'. The main heading is 'Successfully added UNBC'. Below this is a green arrow icon and the text 'Change connection settings' with a subtext 'Open the connection properties so that I can change the settings.' There are no buttons visible in this screenshot.

- a. Select Change Connection settings
- b. Select the security tab

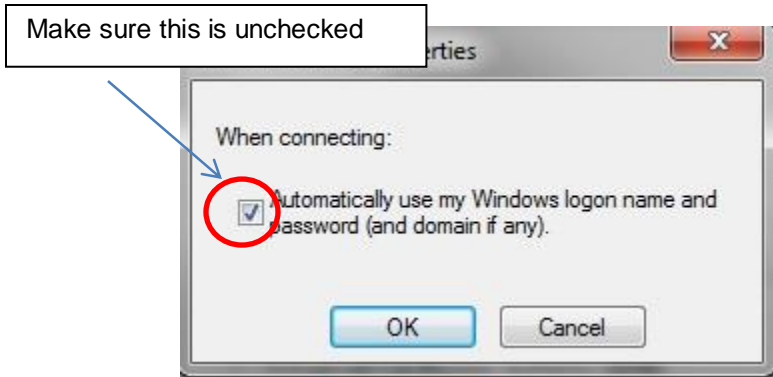


- c. Microsoft: Protected EAP (PEAP) should be automatically selected, if it is not, select it.
- d. Make sure the Remember my credentials for this connection every time I'm logged on is checked.
- e. Click Settings – this opens the PEAP properties window



- f. Use the following settings:

- i. Validate Server Certificate
- ii. Use the GeoTrust Global CA certificate
- iii. Authentication Method: Secured Password (EAP-MSCHAP v2)
- iv. Enable Fast Reconnect
- v. Click on the Configure button and **uncheck the checkbox**



- vi. Click Ok

### 3. Connect to the network

- a. Click on your wireless network indicator
- b. Enter your username and password - make sure you have uni\ ahead of your username