

Disclaimer: In-person events may be altered based on current COVID-19 restrictions

The Where of Teaching and Learning:

An ethnographic survey of practices from the field



Virtual information session: February 24

3:15 - 3:45PM - Presentation

3:45 - 4:15PM - Project Q & A



Welcome / Land Acknowledgements



We are grateful to live, work, and play on the unceded, ancestral territories of fourteen First Nations representing the Dakelh, Nedut'en and Wet'suwet'en peoples. We are working diligently towards creating equity for our learners through conscious acts of Reconciliation.

Thanks to Leona Prince

Agenda – Feb 24, 2022

3:15-3:20- Welcome/ Land Acknowledgements/ Agenda

3:20-3:25- Introduce research team

3:25-3:35- Introduce Research Project- What is WoTL?

3:35-3:45- Ways to get involved in Research Project

3:45-4:15- Q and A

Research Team

Hart Banack

Dr. Hartley Banack is a settler Assistant Professor in the School of Education at the University of Northern British Columbia. His emerging research program brings together his training and expertise in critical pedagogy, environmental education, outdoor learning, social justice, and teacher education.



Christy McHarg

Christy McHarg is a graduate student at UNBC who is completing her masters and a research assistant on the WoTL project.



Provocation

“Nothing will tell you
where you are.
Each moment is a
place you’ve never
been.”

Black Maps
M. Strand



WoTL- Where of Teaching and Learning

Little is known about how educators decide *where* learning experiences occur.

This project aims to shed light on decision making processes of educators, experiences of learners, and the relevance of considering *where* when planning learning.



WHERE ARE
TEACHING
AND
LEARNING
HAPPENING?

WOTL STUDY

Distinct School **WHERE'S**: examples



Classroom

Online/Virtual



Gym

School Yard



Library

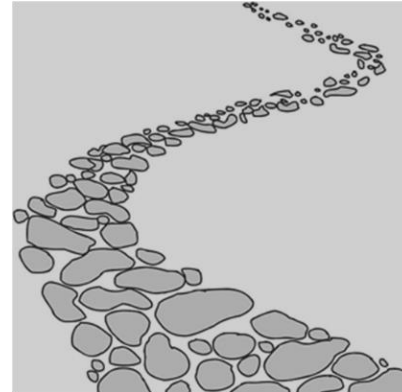
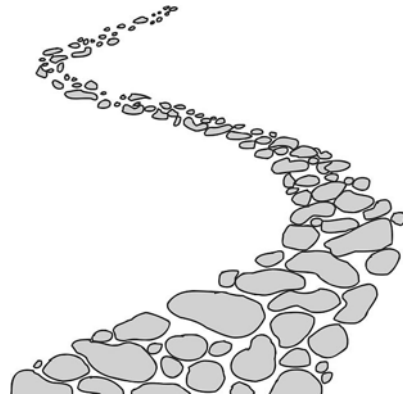
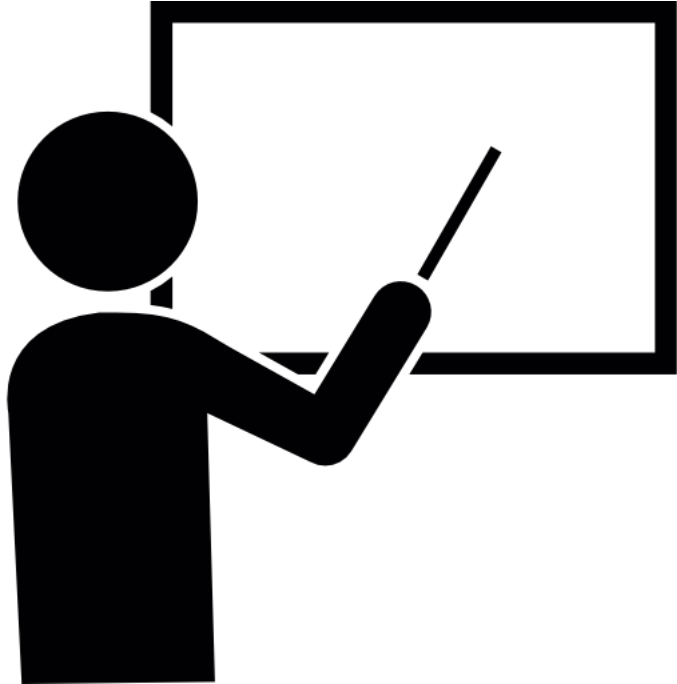
Daydream



WoTL: How to get involved?

2 pathways

Teachers



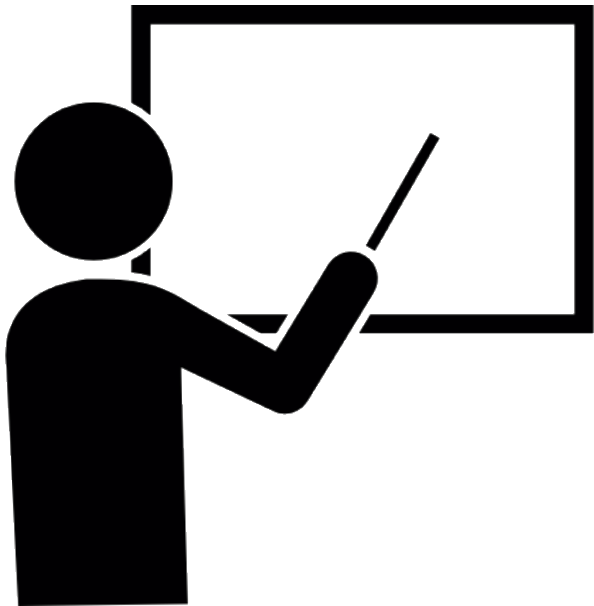
Non-teachers



Teachers

Who?

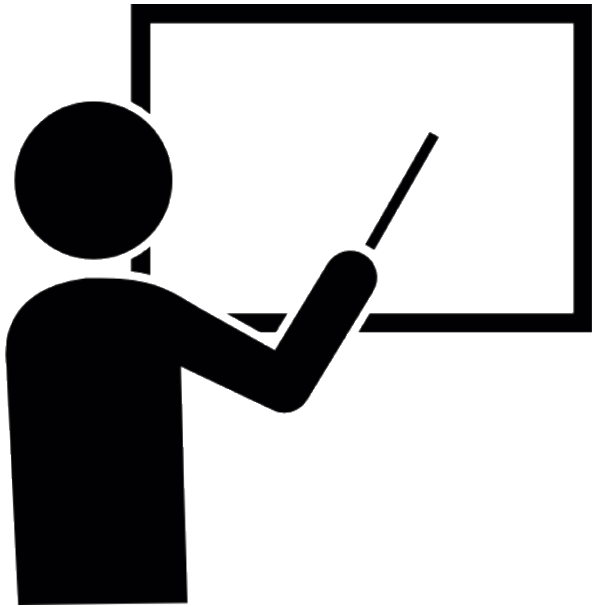
Anyone who self identifies as a K-12 teacher in a BC school



What?

1. **Survey:** 10-15 minutes, one time, online
2. **Interview:** 30-60-minute, in-person or online, one-time)
3. **Track where you teach:** 10 school days, 15 min/day, online recording tool
4. **Observation:** Host a researcher to join your class for 1 half-day in-person observation (2-3 hours).

Teachers



- During in-person interviews, snacks and a drink will be provided.

* If you participate in the online survey and at least ONE other data collection event, you will receive a \$25.00 gift certificate to a local coffee shop. Even if you decide to withdraw later, you will still receive the gift certificate

What?

1. **Survey:** 10-15 minutes, one time, online
2. **Focus Group:** 1.5 hours, in-person or online, one-time



Non-teachers Who?

Non-teachers include: children & youth, family members, pre-service teachers, school administrators, and community stakeholders.

* For in-person participants in a Focus Group: snacks and a drink will be provided.

* If you attend the Focus Group online, no food or drink will be provided.

* You may decide to withdraw from the study at any point and your data will be removed. There are no consequences for withdrawing.

Non-teachers



WoTL WEBSITE

Check out more here:



<https://www2.unbc.ca/education/where-teaching-and-learning-wotl-study>

Ethics Approval from UNBC and SD#91

Questions?

i

Contact Information

For more information about WoTL, please contact Dr. Hartley Banack at: hart.banack@unbc.ca or 250-960-5317.

If you have any concerns or complaints about your rights as a research participant and/or your experiences while participating in this study, contact the UNBC Office of Research at 2509606735 or by e-mail at reb@unbc.ca.

 @wotlresearch

 wotlresearch

 @WoTLresearch

Musi!

Thank you!

