

Visualizing cumulative environmental, community, and health impacts of resource development, Northern Rockies Regional Municipality, 2017

Cumulative impacts are the combined past, present, and future effects of multiple forms of natural resource development.

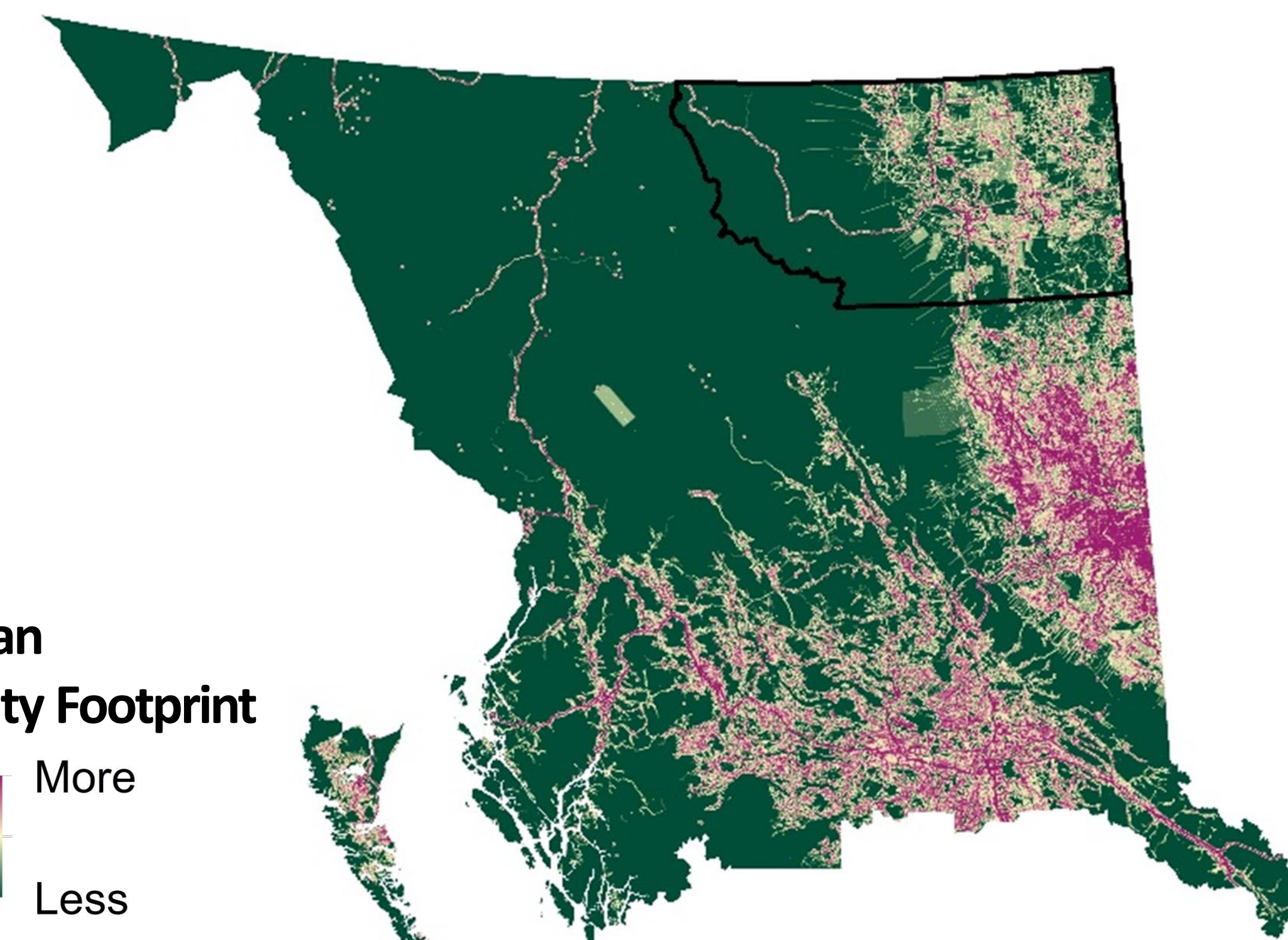
Population Change, 2006-2016

- Greater than 5% decrease
- 5-0% decrease
- 0 - 5% increase
- Greater than 5% increase

20.6%

of the population identify as Aboriginal

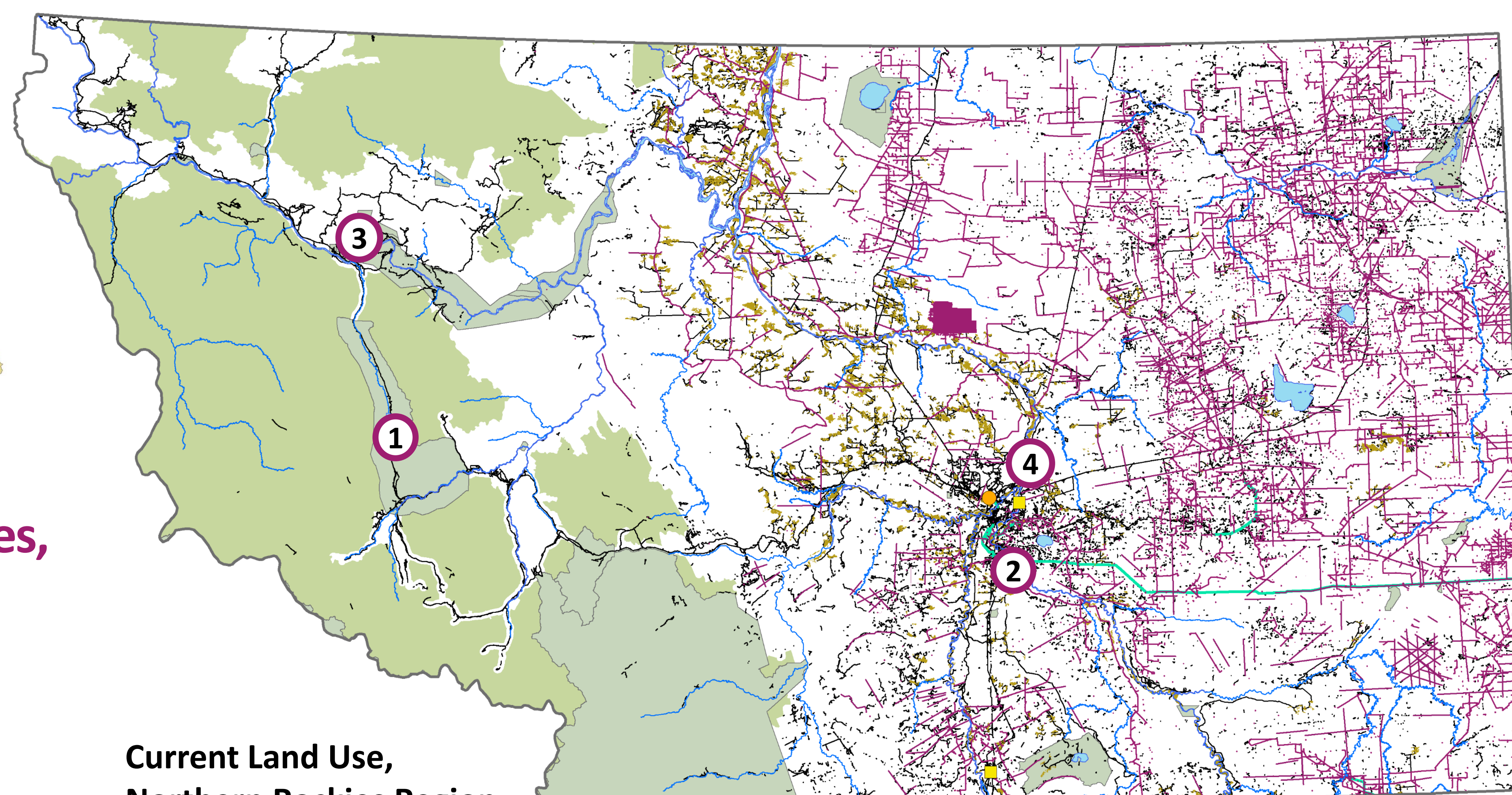
Cumulative impacts can influence environments, ecosystems, landscapes, and non-human species....



Human Activity Footprint

More
Less

Northern Rockies

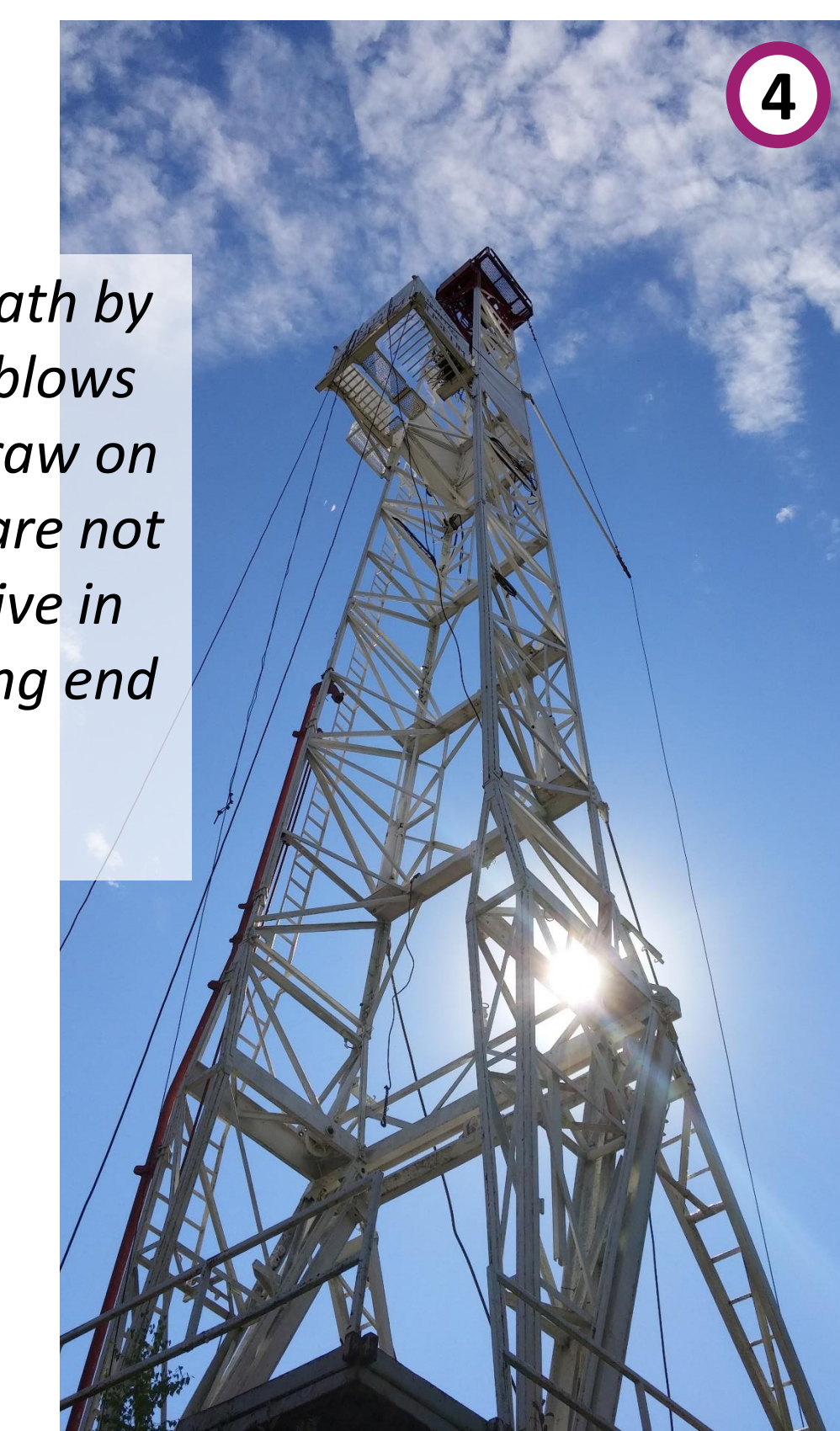


Current Land Use, Northern Rockies Region

- Towns
- First Nation(s) Community
- Transmission line
- Roads
- Regional District Boundary
- Waterbodies
- Oil & gas infrastructure
- Forestry cutblocks
- Parks and protected areas
- Intact forest 2016

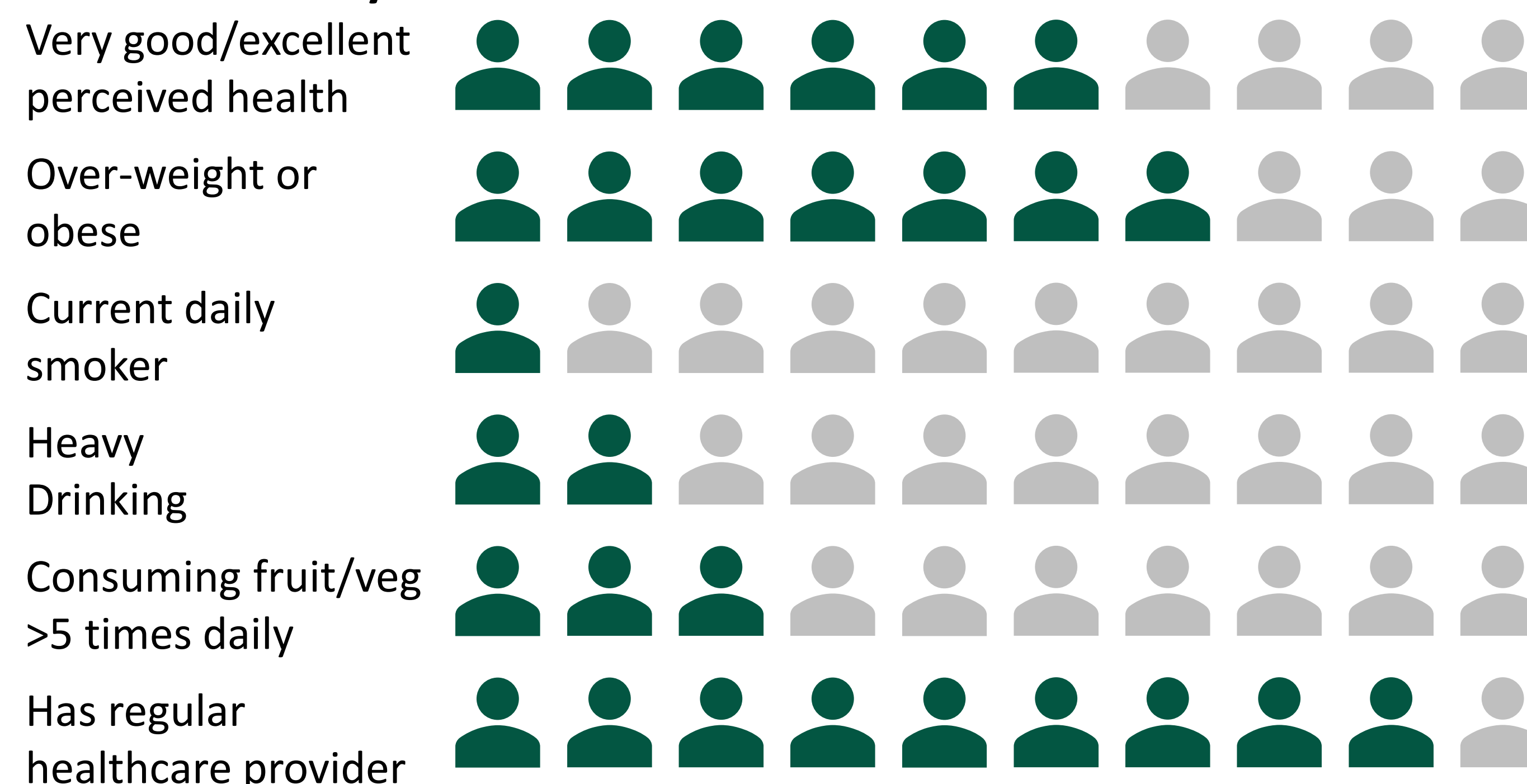
The regional municipality boundaries overlap with the unceded traditional territories of 2 First Nations including: Fort Nelson First Nation and Prophet River First Nation. It is covered by Treaty 8 land, an agreement of peace, coexistence and sharing signed June 21, 1899.

The community experienced death by a thousand cuts. Some severe blows but others are just one more straw on the camel's back...these things are not obvious, but they are cumulative in their impact. And at the receiving end are people and families.
—Fort Nelson, October 2017



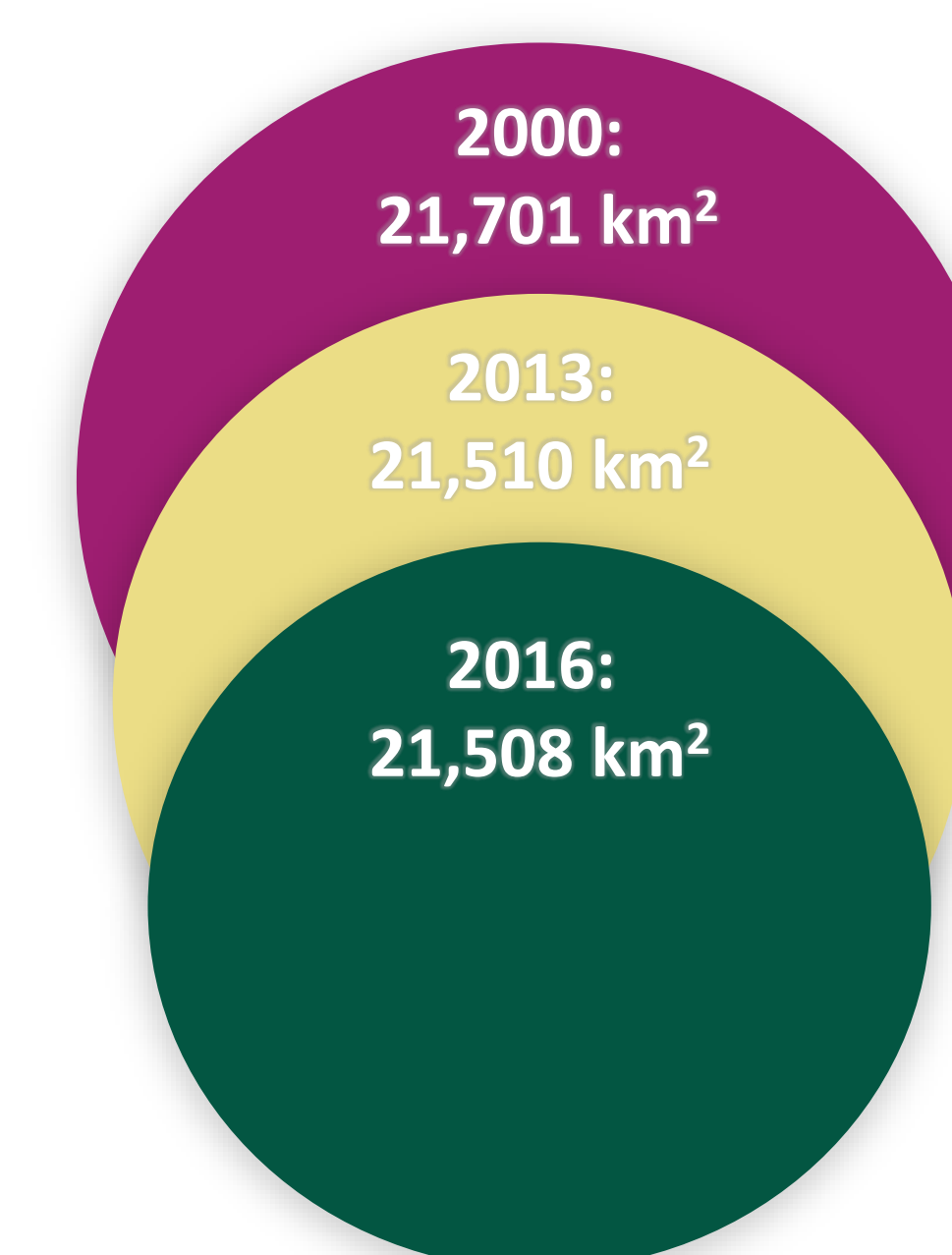
...how communities develop socially, culturally, and economically...

Health Characteristics in the Northeast Health Service Delivery Area 2016-17

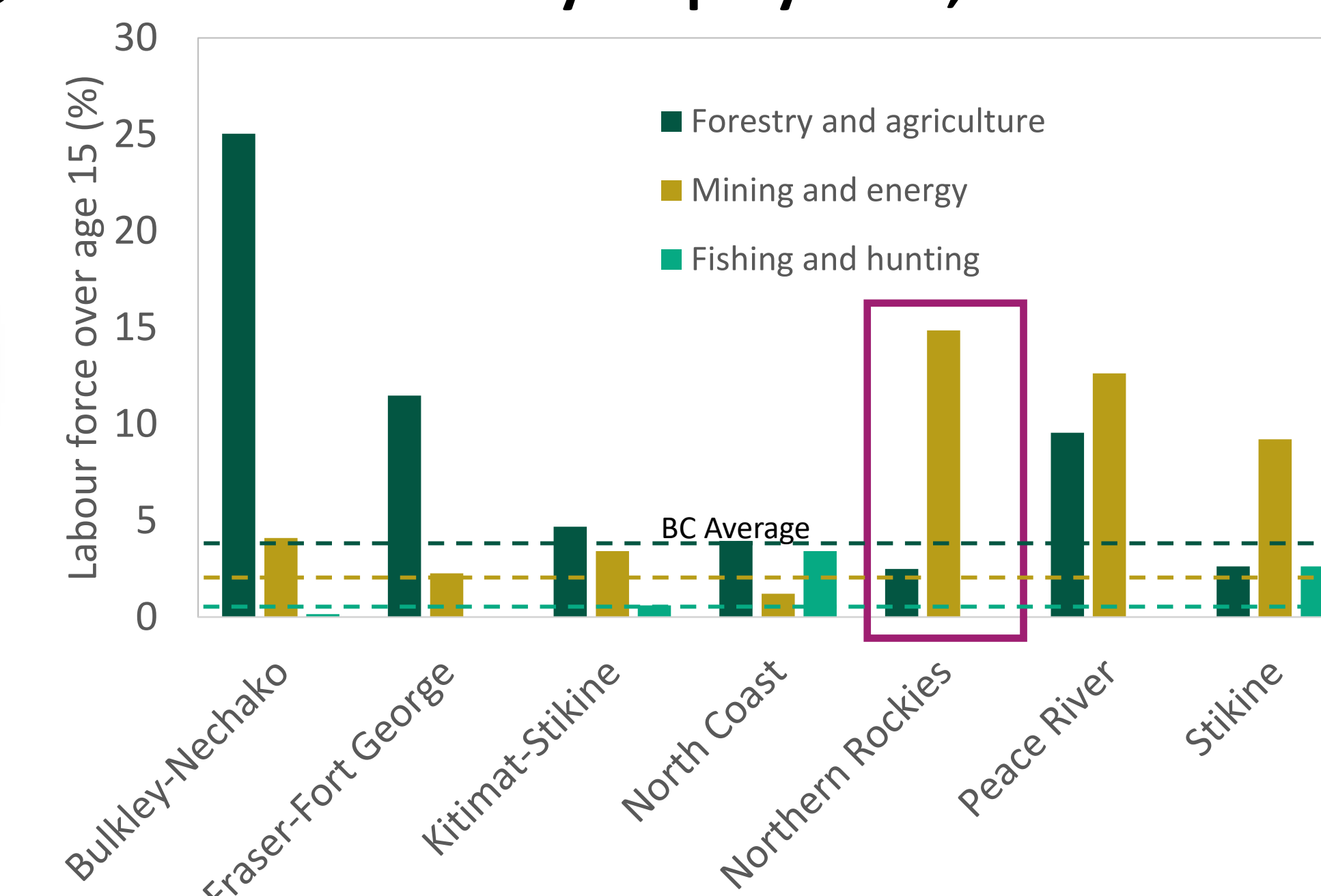


The other general trend we've seen, and it's been accelerated by the economic changes is the centralization of services. Centralization unfortunately doesn't mean that they come here and leave other places, it means they go other places and leave us empty so we have to travel for service or we don't get service.
— Fort Nelson, October 2017

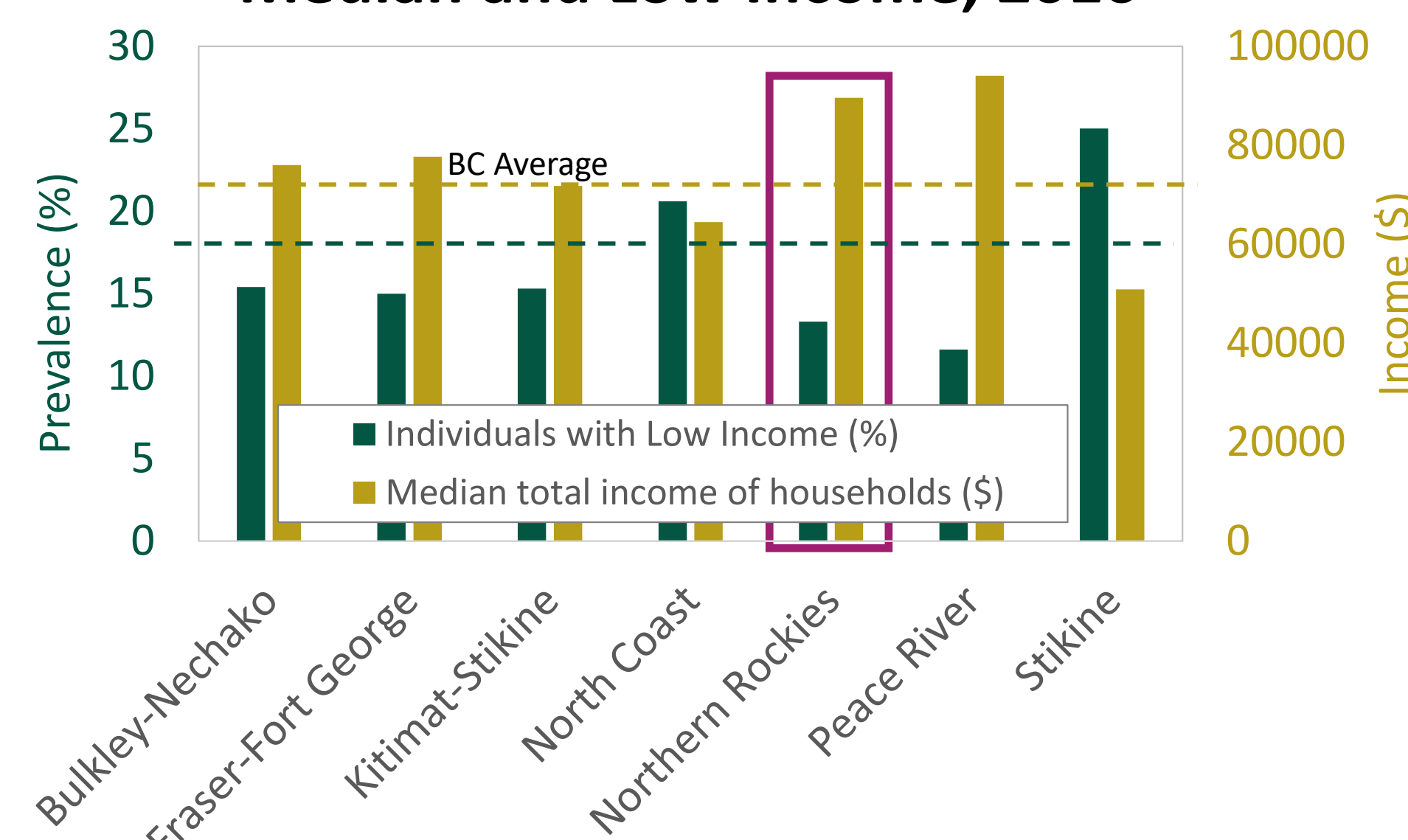
Forest area undisturbed by human activity, 2000-2016



Industry Employment, 2016



Median and Low Income, 2016



73.1%

Population in the Northeast health service region with a strong or very strong sense of belonging to a local community

...and can leave lasting legacies for human health outcomes and access to health services.