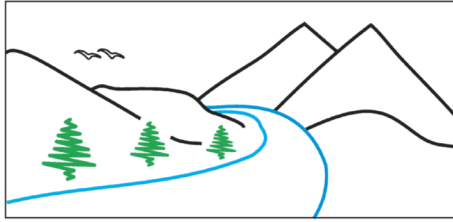


NRESi



"Our environment is our future"

Unable to make it in person? Watch the colloquium at your computer! For Elluminate information and link to the webcast:
http://www.unbc.ca/nres/nresi_webcast.html

Log in as "Guest"

RESEARCH COLLOQUIUM SERIES

Sybille Haeussler, PhD RPF

Research Coordinator,
Future Forest Ecosystem Scientific Council (FFESC)
Ecosystem Science & Management Program, UNBC



Friday
Mar. 12, 2010

3:30 - 4:30

LECTURE THEATRE

7 - 152

LIGHT REFRESHMENTS
SERVED AT 3:20 PM

Complexity Affects the Resilience of Northern BC Ecosystems, Landscapes and Social-Ecological Networks

The Economist (Dec. 5, 2009) stated that "climate change is the hardest political problem the world has ever had to deal with". For ecologists, grappling effectively with the implications of climate change will require new approaches to our science that embrace complexity, interdisciplinarity and non-scientific world views. The presentation will outline my own recent attempts to address this challenge by applying theory and analytical approaches from complex systems science to my highly specialized empirical knowledge of the ecosystems, landscapes and social-ecological networks of northern BC. I will use case studies from 30 years of fieldwork in forest and grassland ecosystems of northwest BC as well as some personal experiences as a "citizen scholar" involved in local community capacity-building in the Bulkley Valley to examine how ecological or social-ecological resilience is related to system complexity and to discuss how these relationships may affect responses to climate change.