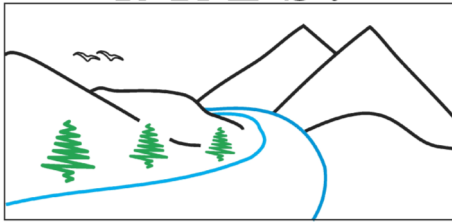


NRESi



"Our environment is our future"

## RESEARCH COLLOQUIUM SERIES

**Dr. George Iwama**

President & Vice-Chancellor

**UNBC**



**Friday**  
**Jan. 15, 2010**

**3:30 - 4:30**

**LECTURE THEATRE**

**7 - 212**

LIGHT REFRESHMENTS  
SERVED AT 3:20 PM

## Stress in Fish

The stress response is vital to the adaptive responses in fishes. I will introduce the generalized stress response in fish at the levels of the organism to the cell. This will involve the response of stress hormones and heat shock proteins in different fish species to various biological and abiotic stressors. I will discuss the work we have been doing with tidepool sculpins on the west coast of Vancouver Island with regard to the possible role heat shock proteins may play in their coping with the variable environment of the intertidal zone.